



# InDesign Preflight Preset

The InDesign Preflight Panel has all of the settings relevant to proper file creation for commercial print, and will warn of potential problems during the design process. Download our preflight profile & follow these instructions for easy installation.

**NOTE**—Not every preflight warning flag will impede production (so they don't all have to be fixed to proceed, but it is good information to have as it makes potential production problems simple to find & fix).

## Step 1

Download the “*NPI\_Preflight.idpp*” profile from the [Customer Shortcuts](#) page of [goNextPage.com](#).

## Step 2

Verify that the Preflight Panel is visible. To show the panel go to: **Window > Output > Preflight**.

## Step 3

Select Define Profiles from the pop-out menu in the upper-right corner of the panel.

## Step 4

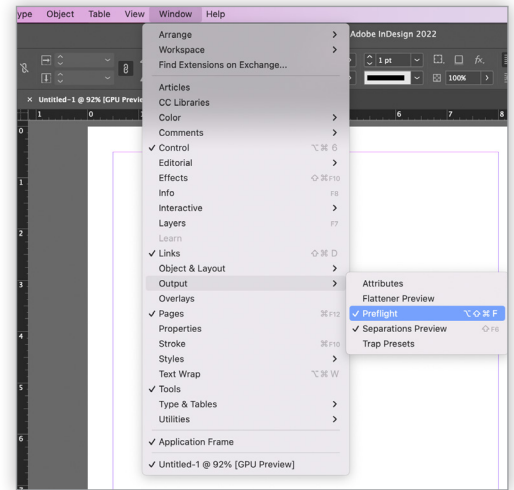
Select Load Profile from the pop-out menu at the bottom of that dialog box & navigate to the “*NPI\_Preflight.idpp*” file. Once loaded, select OK.

## Step 5

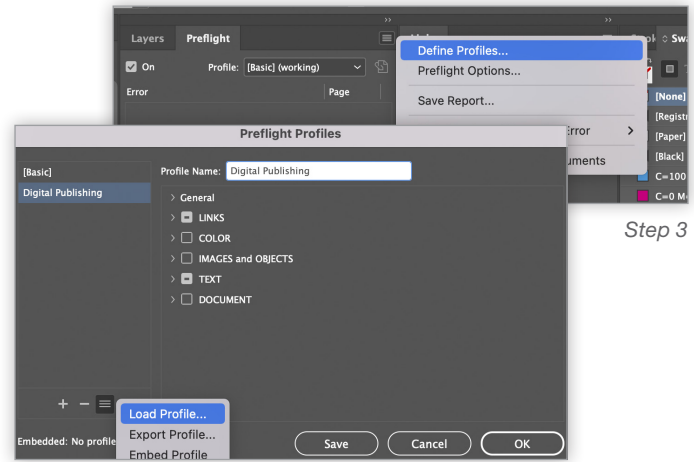
Select Preflight Options from the drop-down menu.

## Step 6

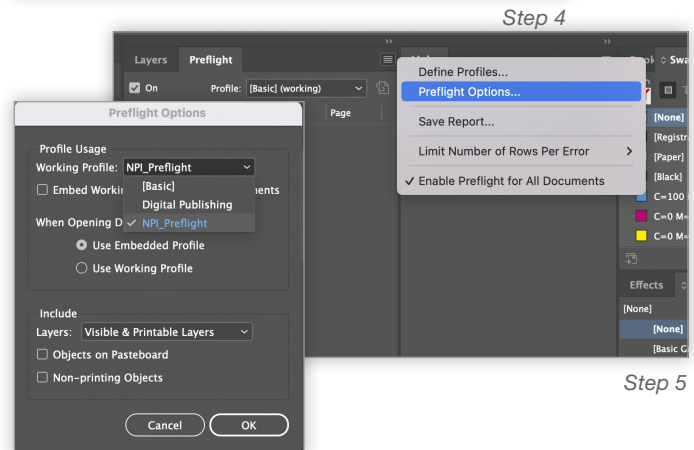
Select “*NPI\_Preflight*” as the Working Profile & then select OK.



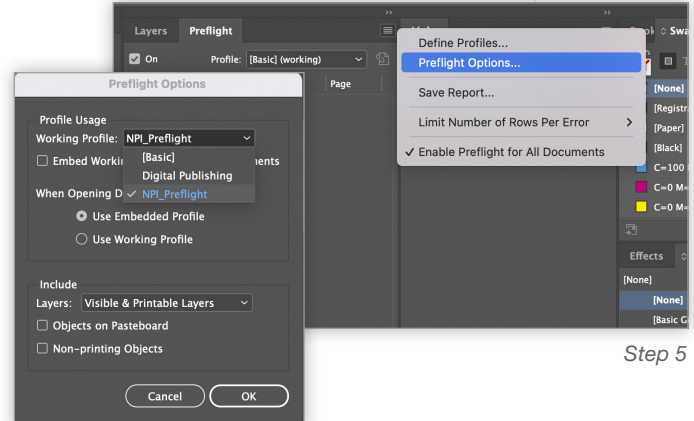
Step 2



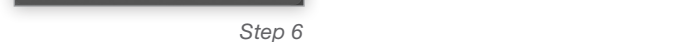
Step 3



Step 4



Step 5



Step 6